



COMPACT SERIES 2025
Catalog

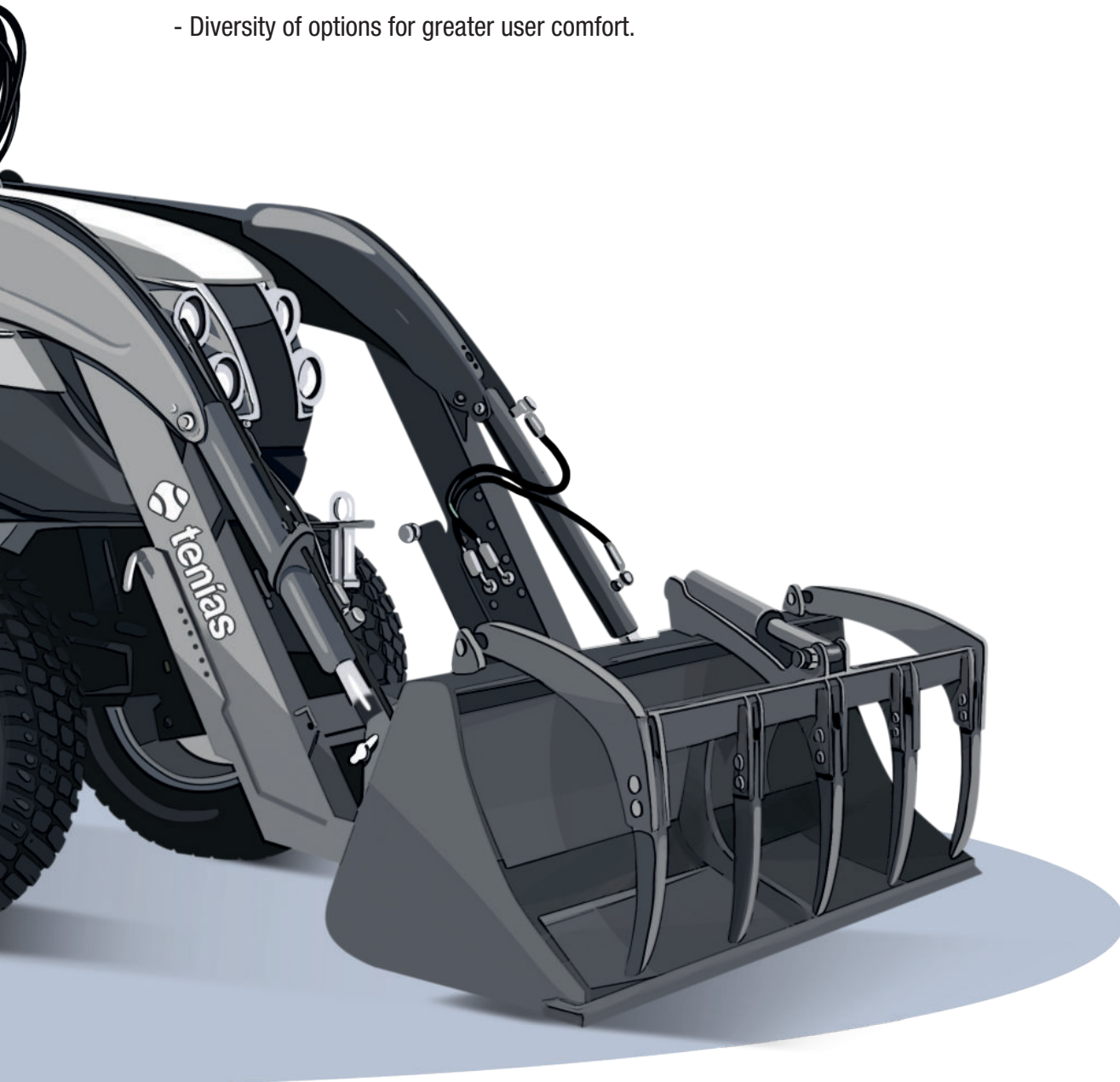
www.tenias.com

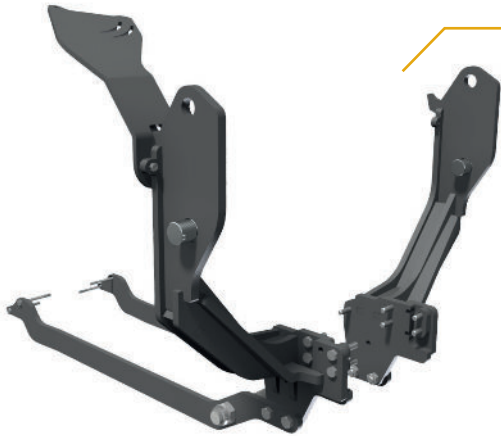


FOR COMPACT TRACTORS AND GREEN SPACES

LIGHT BUT ROBUST, AGILE AND POWERFUL WITH FULL VISIBILITY.
 MANUFACTURED AND DESIGNED FOR CARRYING OUT THE MOST DEMANDING WORK WITH
 FULL SAFETY AND IN COMFORT..

- For 20 to 60 HP tractors.
- Quick hitching and unhitching of the loader by means of the safety pin.
- The bucket is designed with the precise angles for complete and optimal loading using little pushing power.
- Hydraulic system adapted to each tractor model.
- Diversity of options for greater user comfort.





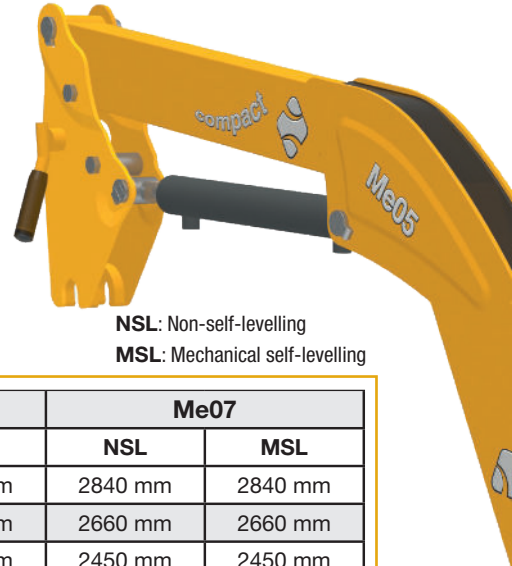
SUBFRAMES ADAPTED TO EACH TRACTOR MODEL

Adaptations are specially designed for each tractor model, which allows access to all the engine's parts.

In all models that allow it, tie-bars are included at the rear of the tractor, which provide the subframe with extra robustness for the most demanding work.

HITCHING OF IMPLEMENTS BY MEANS OF A PIN

The hitching by pin is a simple option for loaders with little implement rotation, without sacrificing safety.

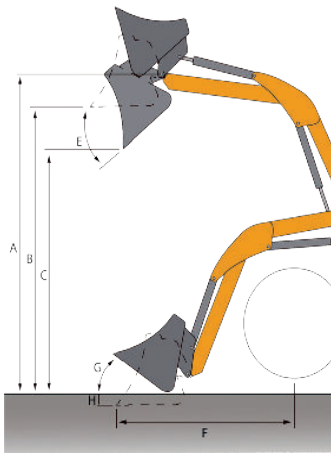


NSL: Non-self-levelling
MSL: Mechanical self-levelling

TECHNICAL CHARACTERISTICS

MOD	Me04		Me05		Me06		Me07	
	NSL	MSL	NSL	MSL	NSL	MSL	NSL	MSL
A	1740 mm	1740 mm	1980 mm	1980 mm	2600 mm	2600 mm	2840 mm	2840 mm
B	1550 mm	1550 mm	1790 mm	1790 mm	2420 mm	2420 mm	2660 mm	2660 mm
C	1285 mm	1285 mm	1525 mm	1525 mm	2210 mm	2210 mm	2450 mm	2450 mm
E	50°	50°	50°	50°	40°	40°	40°	40°
F	1250 mm	1250 mm	1400 mm	1400 mm	1300 mm	1300 mm	1430 mm	1430 mm
G	50°	50°	50°	50°	40°	40°	40°	40°
H	90 mm	90 mm	90 mm	90 mm	50 mm	50 mm	50 mm	50 mm
I	390 kg	390 kg	450 kg	450 kg	770 kg	770 kg	1120 kg	1120 kg
J	310 kg	310 kg	365 kg	365 kg	420 kg	420 kg	600 kg	600 kg
K	Up to 25 hp	Up to 25 hp	Up to 30 hp	Up to 30 hp	From 30 hp - 45 hp	From 30 hp - 45 hp	From 45 hp - 60 hp	From 45 hp - 60 hp
L	90 kg	110 kg	101 kg	122 kg	155 kg	178 kg	181 kg	204 kg

NOTE: The measurements given can vary according to the model and type of tractor. The measurements have been taken at the working pressure of 190 bar and the weight placed on pallet forks.



- A Maximum lift height up to the rotation axis
- B Maximum lift height below the bucket level
- C Distance to the ground with tipped bucket
- E Maximum tipping angle
- F Reach with the bucket on the ground
- G Bucket pickup angle
- H Excavation depth
- I Starting force
- J Load capacity at maximum height
- K Recommended power
- L Weight

PINS

The loader is equipped with flanged pins on all joints (brake).



LEVELLING SYSTEM (Parallelogram)



EURO HEADSTOCK

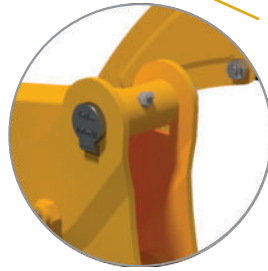


BOBCAT HEADSTOCK



LUBRICATION POINTS

The loader has lubrication points on all its joints, which facilitates maintenance and prolongs the useful life of the machine.



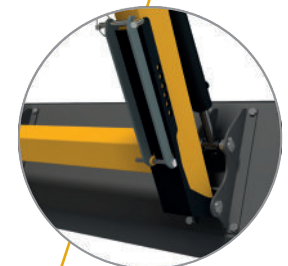
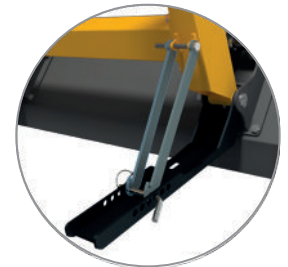
INTERNAL HYDRAULIC HOSES

The hydraulic hoses of the loader are housed inside the arm, which protects them from external agents and impacts, without sacrificing quick access to the terminals or connections.



LEVELLING ROD

This rod allows the operator to check the degree of oscillation of the implement.



RETRACTABLE STAND

The retractable stands are easy to fold in and out and are stowed along the length of the arm.



OPTIONS |

THIRD FUNCTION

Solenoid valve



Distributor with cross joystick



FRONT GUARD



PAINT FINISH IN DIFFERENT COLOURS





STANDARD BUCKET

WIDTH (m.)	CAPACITY (lt.)	CAPACITY HEAPED (lt.)	WEIGHT (kg.)
1,20	135	179	49
1,50	169	224	59



GRAB BUCKET

WIDTH (m.)	CAPACITY (lt.)	CAPACITY HEAPED (lt.)	WEIGHT (kg.)
1,20	135	179	87
1,50	169	224	101



MANURE FORK

WIDTH (m.)	TEETH	TINE LENGTH (mm.)	WEIGHT (kg.)
1,20	6	565	47
1,50	7	565	58



MANURE FORK WITH GRAB

WIDTH (m.)	TEETH	GRIP OPENNING (mm.)	WEIGHT (kg.)
1,20	6	770	72
1,50	7	770	100



PALLET FORK

ALLOWED WEIGHT (kg.)	TINE LENGTH (mm.)	MAX. WIDTH (mm.)	WEIGHT (kg.)
Depending on loader model (400 kg. max)	850	700	83



4 IN 1 BUCKET

WIDTH (m.)	CAPACITY (lt.)	GRIP OPENNING (mm.)	WEIGHT (kg.)
1,20	125	700	87
1,50	160	700	93



BALE FORK

WIDTH (m.)	TEETH	TINE LENGTH (mm.)	WEIGHT (kg.)
1,20	2	564	40





FACTORY AND HEAD OFFICES

Polígono Valdeferrín, C/3 – Pcla 91
50600 Ejea de los Caballeros
(Zaragoza-España)
+34 976 67 71 50
tenias@tenias.com

CONTACT

Robert Maxson Shier
T. +34 644 271 597
mshier@tenias.com

